

# SMITH Fibercast™

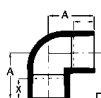
A Varco Company

## GREEN THREAD® Performance Plus™ FITTINGS DIMENSIONS

GREEN THREAD *Performance Plus* fittings are filament wound with fiberglass and amine-cured epoxy resin. The fittings are rated for 300/450 psig (cyclic/steady) pressure service up to 225°F. The bells are compatible with RED THREAD, RED THREAD *Performance Plus*, GREEN THREAD *Performance Plus* and GREEN THREAD® pipe. Refer to Bulletin No. A1255, RED THREAD II *Performance Plus* or

Bulletin No. A1325, GREEN THREAD *Performance Plus*, for pipe dimensions, general specifications and physical properties. When joining to pipe, 8000 series adhesives must be used.

Many 8" - 12" GREEN THREAD *Performance Plus* fittings are manufactured in compliance with API Specification 15LR 6th Edition, at 200°F.



### 90° Elbows

Bell x Bell, Short Radius, API Approved

Nominal Pipe Size (In/mm)	A (In/mm)	X <sup>(1)</sup> (In/mm)	Nominal Weight (Lbs/kg)
8	13 1/2	5 1/2	21
10	15 3/4	7	40
12	17	7 5/8	60
200	295	108	9.5
250	375	140	18.1
300	406	156	27.2



### 45° Elbows

Bell x Bell, Short Radius, API Approved

Nominal Pipe Size (In/mm)	A (In/mm)	X <sup>(1)</sup> (In/mm)	Nominal Weight (Lbs/kg)
8	10	5 1/2	15
10	11 1/4	7	30
12	12 1/2	7 5/8	45
200	206	108	6.8
250	260	140	13.6
300	292	156	20.4

Bell x Bell, Long Radius 1.5D

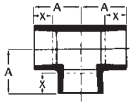
8	19 1/2	5 1/2	21
10	23 1/4	7	40
12	27	7 5/8	60
14	30	6 1/2	118
16	34	6 3/4	155
18	40 3/4	12	210
20	47 1/4	13 3/4	280
24	57	15 5/8	400
200	448	108	9.5
250	565	140	18.1
300	660	156	27.2
350	762	159	53.6
400	864	162	70.4
450	1035	305	95.3
500	1200	380	127.0
600	1448	457	181.0

Bell x Bell, Long Radius 1.5D

8	12 1/2	5 1/2	15
10	14 1/2	7	30
12	16 1/2	7 5/8	45
14	17 5/8	6 1/2	76
16	20	6 3/4	100
18	25	12	145
20	29 3/4	13 3/4	180
24	36	15 5/8	270
200	270	108	6.8
250	343	140	13.6
300	394	156	20.4
350	448	159	34.5
400	508	162	45.5
450	635	309	65.8
500	756	380	81.6
600	914	457	122.0

(1) This is a nominal make-up dimension for drawing layout work only. Do not use for assembly dimensions.

# GREEN THREAD® Performance Plus™ FITTINGS DIMENSIONS



## Tees

Bell x Bell x Bell, API Approved

Nominal Pipe Size (In/mm)	A (In/mm)	X <sup>(1)</sup> (In/mm)	Nominal Weight (Lbs/kg)
8	13 1/2	5 1/2	54
10	15 3/4	7	75
12	17	7 5/8	100
200	295	108	24.5
250	375	140	34.0
300	406	156	45.4



## Concentric Reducers

Bell x Bell x Bell, API Approved

Nominal Pipe Size (In/mm)	A (In/mm)	X <sup>(1)</sup> (In/mm)	X <sup>(2)</sup> (In/mm)	Nominal Weight (Lbs/kg)
8 x 6	16 5/8	5 1/2	2 3/4	21
10 x 8	21	7	5 1/2	40
12 x 10	23 1/2	7 5/8	7	60
200 x 150	508	108	102	9.5
250 x 200	559	108	108	18.1
300 x 250	559	108	108	27.2

### Bell x Bell x Bell

14	19 1/2	6 1/2	160
16	21 1/4	6 3/4	200
18	26 1/2	12	260
20	31 1/4	13 3/4	340
24	35	15 5/8	475
350	495	159	72.7
400	580	162	90.9
450	673	305	118.0
500	794	380	154.5
600	889	457	215.9

### Bell x Bell

14 x 12	26 3/8	6 1/2	7 5/8	57
16 x 14	29 1/2	6 3/4	6 1/2	76
18 x 16	33 3/4	12	6 3/4	110
20 x 18	41	13 3/4	12	140
24 x 20	58 1/4	15 5/8	13 3/4	190
350	645	159	156	25.9
400	749	162	159	34.5
450	864	305	203	49.9
500	1041	380	305	63.5
600	1480	457	380	86.2

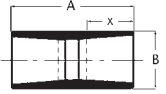
Equivalent pipe footage to be added for standard fittings when calculating pressure loss for *Performance Plus* piping with fluid velocities of 10 ft./sec.

Fitting	8"	10"	12"	14"	16"	18"	20"	24"
90° Elbow	10	13	16	18	22	24	28	34
45° Elbow	6	7	9	10	11	13	15	18
Tee – Flow-thru Run	13	16	20	23	27	31	35	43
Tee – Flow-thru Branch	38	49	60	70	82	93	105	130
One-step Concentric Reducers <sup>(2)</sup>	15	12	6	5	5	4	4	6

(1) This is a nominal make-up dimension for drawing layout work only. Do not use for assembly dimensions.

(2) NOTE: The equivalent footages to be added for concentric reducers are expressed in terms of the smaller pipe size, e.g. a 10" x 8" concentric reducer is equivalent to 6 feet of 8" pipe.

# GREEN THREAD® Performance Plus™ FITTINGS DIMENSIONS



## Sleeve Couplings

Bell x Bell, API Approved\*

Nominal Pipe Size (In/mm)	GT A (In/mm)	RT* A (In/mm)	B (In/mm)	X <sup>(1)</sup> (In/mm)	Nominal Weight (Lbs/kg)
8	13	12 1/2	9 1/8	5	5.8
10	16 1/2	16 1/2	11 1/4	5 1/2	9.2
12	18	18	13 3/8	6 1/8	14.3
200	330	318	232	127	2.6
250	419	419	286	140	4.2
300	457	457	340	156	6.5

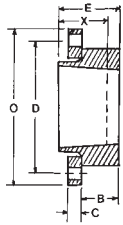
Bell x Bell

Nominal Pipe Size (In/mm)	GT A (In/mm)	RT A (In/mm)	B (In/mm)	X <sup>(1)</sup> (In/mm)	Nominal Weight (Lbs/kg)
14	18	16	15 1/4	6 1/4	16.7
16	18	18	17 1/2	6 3/8	19.1
18	22	21	19 3/8	6	23.0
20	27	26	21 1/2	6 1/2	34.0
24	33	31	25 7/8	7 3/4	57.0
350	457	406	387	159	7.6
400	457	457	445	162	8.7
450	559	533	476	152	10.4
500	686	660	521	178	15.4
600	838	787	625	229	25.9

GT = GREEN THREAD

RT = RED THREAD II

# GREEN THREAD® Performance Plus™ FITTINGS DIMENSIONS



## RED THREAD II Van Stone-Type Flange

**ASTM Designation Codes:** 8" RTR-112F-665; 10"-16" RTR-112F-765;  
18"-24" RTR-112F-668. All flanges are ANSI B16.5 300-lb. Bolt Hole circle.  
Use only with full-face, 60-70 durometer gaskets and flat-faced flanges.

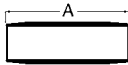
API Approved

Nom. Pipe Size (In/mm)	B (In/mm)	C (In/mm)	D (In/mm)	E (In/mm)	O (In/mm)	X <sup>(1)</sup> (In/mm)	Nom. Wt. (Hub Only) (Lbs/kg)	Bolt Holes diameter (In/mm)	
								No.	
8	3	1 1/2	13	6 1/4	15	5 3/4	12.7	12	1
10	3 1/4	1 3/4	15 1/4	7	17 1/2	5 1/2	17.4	16	1 1/8
12	3 3/4	1 7/8	17 3/4	7 3/4	20 1/2	6 1/8	27.1	16	1 1/4
14	4 1/2	2	20 1/4	8	23	5 1/4	31.6	20	1 1/4
16	5 3/8	2 1/4	22 1/2	9	25 1/2	5 1/4	36.1	20	1 3/8
200	76	38	330	159	381	146	5.76	12	25
250	83	44	387	178	445	140	7.89	16	29
300	95	48	451	197	521	156	12.3	16	32
350	114	51	514	203	584	133	14.3	20	32
400	137	57	572	229	648	133	16.4	20	35

## RT Van -Stone Type Flange

18	7	2 1/4	24 3/4	10 1/2	28	6 1/2	89.1	24	1 3/8
20	8	2 1/4	26 7/8	12 1/2	30 1/2	8	117.2	24	1 3/8
24	9 5/8	2 1/2	32	15 1/2	36	10	188.6	24	1 3/8
450	178	57	629	178	711	165	40.4	24	35
500	203	57	683	203	775	203	53.2	24	35
600	244	64	813	244	914	254	85.5	24	41

## RED THREAD II Nipples



API Approved

Nominal Pipe Size (In.)	OAL			
	12"	16"	24"	36"
8	▲	▲	▲	
10	▲	▲	▲	▲
12	▲	▲	▲	▲

## RT Nipples

Nominal Pipe Size (In.)	OAL			
	12"	16"	24"	36"
14	▲	▲	▲	▲
16	▲	▲	▲	▲
18			▲	▲
20			▲	▲
24			▲	▲

▲ Standard

It is the policy of Smith Fibercast to improve its products continually. In accordance with that policy, the right is reserved to make changes in specifications, descriptions, and illustrative material contained in this bulletin as conditions warrant. The information contained herein is general in nature and is not intended to express any warranty of any type whatsoever, nor shall any be implied.

