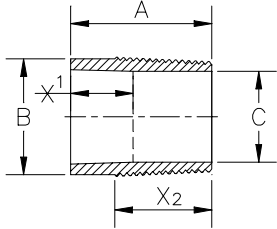
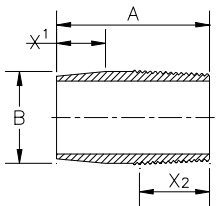


Adapter
Bell x Male 8rd



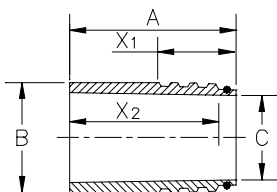
Product Code	Nominal Pipe Size In (mm)	Pressure PSI (MPa)		A In (mm)	B In (mm)	C In (mm)	X ₁₍₇₎ In (mm)	X ₂₍₇₎ In (mm)	Wt Lb (kg)
		Static	Cyclic						
GAO452B23	2 (50,8)	450 (3,1)	300 (2,1)	5.60 (142,2)	2.74 (69,6)	1.94 (49,3)	1.75 (44,5)	2.94 (74,7)	1.2 (0,54)
GAO453B35	3 (76,2)	450 (3,1)	300 (2,1)	6.50 (165,1)	3.89 (98,8)	2.94 (74,7)	2.00 (50,8)	3.50 (88,9)	2.4 (1,09)
GAO454B45	4 (101,6)	450 (3,1)	300 (2,1)	8.00 (203,2)	4.94 (125,5)	3.93 (99,8)	2.65 (67,3)	4.38 (111,3)	4.1 (1,86)
GAO456B65	6 (152,4)	450 (3,1)	300 (2,1)	8.50 (215,9)	6.79 (172,5)	5.94 (150,9)	3.25 (82,6)	4.25 (108,0)	5.3 (2,40)

Adapter
Spigot x Male 8rd



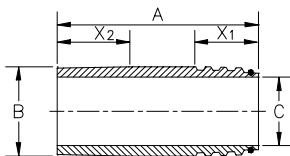
GAN452B23	2 (50,8)	450 (3,1)	300 (2,1)	5.75 (146,1)	2.74 (69,6)	1.94 (49,3)	1.75 (44,5)	2.94 (74,7)	1.0 (0,45)
GAN453B35	3 (76,2)	450 (3,1)	300 (2,1)	6.50 (165,1)	3.89 (98,8)	2.94 (74,7)	2.00 (50,8)	3.50 (88,9)	1.9 (0,86)
GAN454B45	4 (101,6)	450 (3,1)	300 (2,1)	8.00 (203,2)	4.94 (125,5)	3.93 (99,8)	2.65 (67,3)	4.38 (111,3)	4.2 (1,91)
GAN456B65	6 (152,4)	450 (3,1)	300 (2,1)	8.50 (215,9)	6.79 (172,5)	5.94 (150,9)	3.25 (82,6)	4.25 (108,0)	5.7 (2,59)
GAN458B85	8 (203,2)	450 (3,1)	300 (2,1)	10.00 (254,0)	8.79 (223,3)	7.74 (196,6)	4.20 (106,7)	4.85 (123,2)	9.92 (252,0)

Adapter
Bell x Super Seal Male



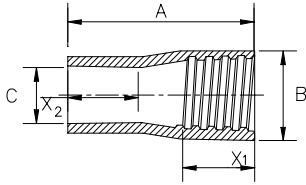
GAO452R2B	2 (50,8)	450 (3,1)	300 (2,1)	6.00 (152,4)	2.91 (73,9)	1.94 (49,3)	3.00 (76,2)	1.75 (44,5)	1.6 (0,73)
GAO453R3B	3 (76,2)	450 (3,1)	300 (2,1)	6.25 (158,8)	4.07 (103,4)	2.94 (74,7)	3.00 (76,2)	2.00 (50,8)	2.4 (1,09)
GAO454R4B	4 (101,6)	450 (3,1)	300 (2,1)	7.15 (181,6)	5.11 (129,8)	3.93 (99,8)	3.25 (82,6)	2.65 (67,3)	4.3 (1,95)
GAO456R6B	6 (152,4)	450 (3,1)	300 (2,1)	8.00 (203,2)	7.26 (184,4)	5.94 (150,9)	3.50 (88,9)	3.25 (82,6)	8.0 (3,63)
GAO308R8B	8 (203,2)	300 (3,1)	200 (1,4)	8.75 (222,3)	8.97 (227,8)	7.74 (196,6)	5.00 (127,0)	2.75 (69,7)	10.1 (4,58)
GAO458R8B	8 (203,2)	450 (3,1)	300 (2,1)	9.75 (247,7)	8.97 (227,8)	7.74 (196,6)	5.00 (127,0)	4.20 (106,7)	11.3 (5,13)

Adapter
Spigot x Super Seal Male



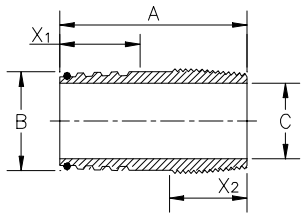
GAN452R2B	2 (50,8)	450 (3,1)	300 (2,1)	7.00 (177,8)	2.91 (73,9)	1.94 (49,3)	3.00 (76,2)	1.75 (44,5)	1.9 (0,86)
GAN453R3B	3 (76,2)	450 (3,1)	300 (2,1)	7.00 (177,8)	4.07 (103,4)	2.94 (74,7)	3.00 (76,2)	2.00 (50,8)	3.2 (1,45)
GAN454R4B	4 (101,6)	450 (3,1)	300 (2,1)	8.00 (203,2)	5.11 (129,8)	3.93 (99,8)	3.25 (82,6)	2.65 (67,3)	4.9 (2,22)
GAN456R6B	6 (152,4)	450 (3,1)	300 (2,1)	8.80 (223,5)	7.26 (184,4)	5.94 (150,9)	3.50 (88,9)	3.25 (82,6)	8.8 (3,99)
GAN306R6B	8 (203,2)	300 (2,1)	200 (1,4)	9.80 (248,9)	8.97 (227,8)	7.74 (196,6)	5.00 (127,0)	2.75 (69,7)	11.3 (5,13)
GAN458R8B	8 (203,2)	450 (3,1)	300 (2,1)	11.20 (284,5)	8.97 (227,8)	7.74 (196,6)	5.00 (127,0)	4.20 (106,7)	13.0 (5,90)

Adapter
Bell x Super Seal Female



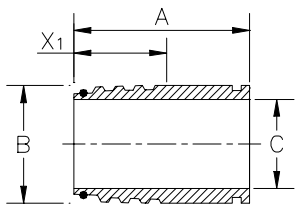
Product Code	Nominal Pipe Size In (mm)	Pressure PSI (MPa)		A In (mm)	B In (mm)	C In (mm)	X ₁₍₇₎ In (mm)	X ₂₍₇₎ In (mm)	Wt Lb (kg)
		Static	Cyclic						
GCO452R2B	2 (50,8)	450 (3,1)	300 (2,1)	5.25 (133,4)	3.05 (77,5)	2.38 (60,5)	3.00 (76,2)	1.75 (44,5)	0.8 (0,36)
GCO453R3B	3 (76,2)	450 (3,1)	300 (2,1)	5.50 (139,7)	4.35 (110,5)	3.52 (89,4)	3.00 (76,2)	2.00 (50,8)	1.6 (0,73)
GCO454R4B	4 (101,6)	450 (3,1)	300 (2,1)	6.40 (162,6)	5.50 (139,7)	4.56 (115,8)	3.25 (82,6)	2.65 (67,3)	2.9 (1,32)
GCO456R6B	6 (152,4)	450 (3,1)	300 (2,1)	7.25 (184,2)	8.00 (203,2)	6.62 (168,1)	3.50 (88,9)	3.25 (82,6)	6.9 (3,13)
GCO308R8B	8 (203,2)	300 (2,1)	200 (1,4)	9.00 (228,6)	9.20 (233,7)	7.97 (202,4)	5.00 (127,0)	2.80 (71,1)	8.0 (3,63)
GCO458R8B	8 (203,2)	450 (3,1)	300 (2,1)	10.44 (265,1)	9.55 (242,6)	8.06 (204,7)	5.00 (127,0)	4.20 (106,7)	13.0 (5,90)

Crossover
Super Seal Male x 8rd Male



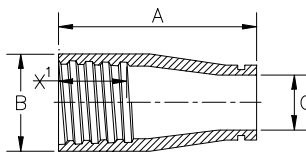
GCN452R23	2 (50,8)	450 (3,1)	300 (2,1)	8.00 (203,2)	2.91 (73,9)	1.94 (49,3)	3.00 (76,2)	2.94 (74,7)	2.2 (1,00)
GCN453R35	3 (76,2)	450 (3,1)	300 (2,1)	8.50 (215,9)	4.07 (103,4)	2.94 (74,7)	3.00 (76,2)	3.50 (88,9)	3.8 (1,72)
GCN454R45	4 (101,6)	450 (3,1)	300 (2,1)	10.00 (254,0)	5.11 (129,8)	3.93 (99,8)	3.25 (82,6)	4.38 (111,3)	6.1 (2,77)
GCN456R65	6 (152,4)	450 (3,1)	300 (2,1)	10.50 (266,7)	7.26 (184,4)	5.94 (150,9)	3.50 (88,9)	4.25 (108,0)	10.5 (4,76)
GCN458R85	8 (203,2)	450 (3,1)	300 (2,1)	12.00 (304,8)	8.97 (227,8)	7.74 (196,6)	5.00 (127,0)	4.85 (123,2)	13.9 (6,31)

Crossover
Super Seal Male x Groove



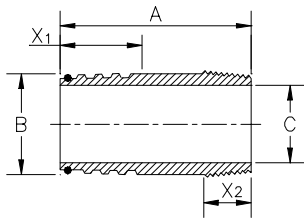
GCN452R2G	2 (50,8)	450 (3,1)	300 (2,1)	7.30 (185,4)	2.91 (73,9)	1.94 (49,3)	3.00 (76,2)	---	2.0 (0,91)
GCN303R3G	3 (76,2)	300 (2,1)	200 (1,4)	8.50 (215,9)	4.07 (103,4)	2.94 (74,7)	3.00 (76,2)	---	3.8 (1,72)
GCN224R4G	4 (101,6)	225 (1,6)	150 (1,0)	9.50 (241,3)	5.11 (129,8)	3.93 (99,8)	3.25 (82,6)	---	5.8 (2,63)
GCN226R6G	6 (152,4)	225 (1,6)	150 (1,0)	10.00 (254,0)	7.26 (184,4)	5.94 (150,9)	3.50 (88,9)	---	10.0 (4,54)
GCN228R8G	8 (203,2)	225 (1,6)	150 (1,0)	11.00 (279,4)	8.97 (227,8)	7.74 (196,6)	5.00 (127,0)	---	12.7 (5,76)

Crossover
Super Seal Female x Groove



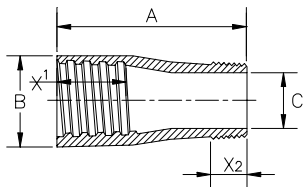
GCO452R2G	2 (50,8)	450 (3,1)	300 (2,1)	5.25 (133,4)	3.05 (77,5)	1.94 (49,3)	3.00 (76,2)	---	1.0 (0,45)
GCO303R3G	3 (76,2)	300 (2,1)	200 (1,4)	6.00 (152,4)	4.35 (110,5)	2.94 (74,7)	3.00 (76,2)	---	1.8 (0,82)
GCO224R4G	4 (101,6)	225 (1,6)	150 (1,0)	6.40 (162,6)	5.50 (139,7)	3.93 (99,8)	3.25 (82,6)	---	3.0 (1,36)
GCO226R6G	6 (152,4)	225 (1,6)	150 (1,0)	7.75 (196,9)	8.00 (203,2)	5.94 (150,9)	3.50 (88,9)	---	7.3 (3,31)
GCO228R8G	8 (203,2)	225 (1,6)	150 (1,0)	10.44 (265,1)	9.20 (233,7)	7.74 (196,6)	5.00 (127,0)	---	8.0 (3,63)

Crossover
Super Seal Male x
Male NPT



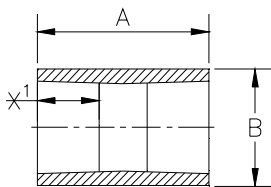
Product Code	Nominal Pipe Size In (mm)	Pressure PSI (MPa)		A In (mm)	B In (mm)	C In (mm)	X ₁₍₇₎ In (mm)	X ₂₍₇₎ In (mm)	Wt Lb (kg)
		Static	Cyclic						
GCN452R21	2 (50,8)	450 (3,1)	300 (2,1)	7.30 (185,4)	2.91 (73,9)	1.94 (49,3)	3.00 (76,2)	1.05 (26,7)	2.0 (0,91)
GCN453R31	3 (76,2)	450 (3,1)	300 (2,1)	8.50 (215,9)	4.07 (103,4)	2.94 (74,7)	3.00 (76,2)	1.63 (41,4)	3.8 (1,72)
GCN454R41	4 (101,6)	450 (3,1)	300 (2,1)	9.50 (241,3)	5.11 (129,8)	3.93 (99,8)	3.25 (82,6)	1.73 (43,9)	5.8 (2,63)
GCN456R61	6 (152,4)	450 (3,1)	300 (2,1)	10.00 (254,0)	7.26 (184,4)	5.94 (150,9)	3.50 (88,9)	1.95 (49,5)	10.0 (4,54)
GCN458R81	8 (203,2)	450 (3,1)	300 (2,1)	11.00 (279,4)	8.97 (227,8)	7.74 (196,6)	5.00 (127,0)	2.15 (54,6)	12.7 (5,76)

Crossover
Super Seal Female x
Male NPT



GCO452R21	2 (50,8)	450 (3,1)	300 (2,1)	5.25 (133,4)	3.05 (77,5)	2.81 (71,4)	3.00 (76,2)	1.05 (26,7)	1.0 (0,45)
GCO453R31	3 (76,2)	450 (3,1)	300 (2,1)	6.00 (152,4)	4.35 (110,5)	3.97 (100,8)	3.00 (76,2)	1.63 (41,4)	1.8 (0,82)
GCO454R41	4 (101,6)	450 (3,1)	300 (2,1)	6.40 (162,6)	5.50 (139,7)	5.00 (127,0)	3.25 (82,6)	1.73 (43,9)	3.0 (1,36)
GCO456R61	6 (152,4)	450 (3,1)	300 (2,1)	7.75 (196,9)	8.00 (203,2)	7.18 (182,4)	3.50 (88,9)	1.95 (49,5)	7.3 (3,31)
GCO458R81	8 (203,2)	450 (3,1)	300 (2,1)	10.44 (265,1)	9.55 (242,6)	8.87 (225,3)	5.00 (127,0)	2.15 (54,6)	12.0 (5,44)

Sleeve Couplings
Bell x Bell

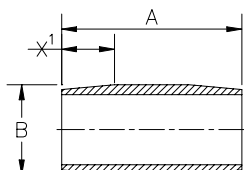


Product Code	Nominal Pipe Size In (mm)	Pressure PSI (MPa)		A In (mm)	B In (mm)	X ₁₍₇₎ In (mm)	Wt Lb (kg)
		Static	Cyclic				
GSC452B	2 (50,8)	450 (3,1)	300 (2,1)	5.375 (136,5)	2.60 (66,0)	1.75 (44,5)	0.41 (0,19)
GSC453B	3 (76,2)	450 (3,1)	300 (2,1)	5.875 (149,2)	3.85 (97,8)	2.00 (50,8)	0.95 (0,43)
GSC454B	4 (101,6)	450 (3,1)	300 (2,1)	7.375 (187,3)	5.00 (127,0)	2.65 (67,3)	2.05 (0,93)
GSC456B	6 (152,4)	450 (3,1)	300 (2,1)	8.000 (203,2)	7.30 (185,6)	3.25 (82,6)	4.79 (2,17)
GSC308B	8 (203,2)	300 (2,1)	200 (1,4)	7.100 (180,3)	8.45 (214,6)	2.75 (69,9)	3.70 (1,68)
GSC458B	8 (203,2)	450 (3,1)	300 (2,1)	9.912 (251,8)	8.80 (223,5)	4.20 (106,7)	8.10 (3,67)

General Notes:

1. All fittings centerline-to-face dimensions nominal $\pm \frac{1}{4}$ inch.
2. All fittings filament wound fiberglass reinforced epoxy.
3. Taper angle on bell end configuration is 1 3/4°.
4. Weights are approximate.
5. Dimensions are American Standards converted to Metric.
7. The X₁ and X₂ Dimensions are insertion depths.

Nipples Spigot x Spigot



Product Code	Nominal Pipe Size In (mm)	Pressure PSI (MPa)		Length In (cm)				B In (mm)	X ₁ (^r) In (kg)
		Static	Cyclic	A=6 (152,4)	A=8 (203,2)	A=10 (254,0)	A=12 (304,8)		
				Weight - lbs (kgs)					
GNN452B-	2 (50,8)	450 (3,1)	300 (2,1)	0.21 (0,30)	0.28 (0,40)	0.35 (0,50)	0.43 (0,60)	2.34 (59,4)	1.75 (44,5)
					GNN452B-006	GNN452B-008	GNN452B-010	GNN452B-012	
GNN453B-	3 (76,2)	450 (3,1)	300 (2,1)	---	0.53 (0,80)	0.66 (1,0)	0.80 (1,2)	3.50 (88,9)	2.00 (50,8)
					GNN453B-010		GNN453B-012		
GNN454B-	4 (101,6)	450 (3,1)	300 (2,1)	---	---	1.0 (1,50)	1.20 (1,8)	4.51 (114,6)	2.65 (67,3)
					GNN454B-010		GNN454B-012		
GNN456B-	6 (152,4)	450 (3,1)	300 (2,1)	---	---	---	2.44 (3,6)	6.65 (168,9)	3.25 (82,6)
					GNN456B-012				
GNN458B-	8 (203,2)	450 (3,1)	300 (2,1)	---	---	---	3.84 (5,7)	8.05 (204,5)	4.20 (106,7)
					GNN458B-012				

LIMITED WARRANTY

Seller warrants that PRODUCTS manufactured by Seller when properly installed, used, and maintained shall be free from defects in material and workmanship. Seller's responsibility under this warranty shall be limited to replacing or repairing PRODUCTS, at Seller's option, the PRODUCTS that prove defective in material or workmanship within one (1) year from the date of installation, provided that Buyer gives Seller prompt notice of any defect or failure and satisfactory proof thereof. Any defective product must be returned to Seller's factory, or any other repair facility designated by Seller. Seller will deliver replacement of defective PRODUCTS to Buyer freight prepaid to the destination provided for in the original order. PRODUCTS returned to Seller for which Seller provides replacement under this warranty shall become the property of the Seller.

This limited warranty does not apply to failure of PRODUCTS caused by abrasive materials, exposure to aggressive fluids, improper application, mishandling, or abuse.

In the event PRODUCTS are altered or repaired by the Buyer and/or end user without prior written approval of the Seller, all warranties are void. Equipment and accessories not manufactured by the seller warranted only to the extent of and by the original manufacturer's warranty. A new warranty period shall not be established for repaired or replaced materials, PRODUCTS, or supplies. Such items shall remain under warranty only for the remainder of the warranty period on original materials, PRODUCTS, or supplies.

The foregoing warranties are in lieu of all other warranties, whether oral, written, express, implied or statutory. Implied warranties of fitness and merchantability shall not apply. Seller's warranty obligations and Buyer's remedies thereunder (except as to title) are solely and exclusively as stated herein. In no case will Seller be liable for consequential damages, labor performed in connection with removal and replacement of the PRODUCTS, loss of production or any other loss incurred because of interruption of service.

IMPORTANT NOTICE

This literature is intended as a guide only. All values listed in this product specification are nominal. Unsatisfactory product results may occur due to environmental fluctuations, variations in operating procedures, or interpolation of data. We suggest that personnel using this data have specialized training and experience in the application of these products and their normal installation and operating conditions. Your intended application of these products should be verified for propriety by your engineers. We expressly disclaim responsibility for any consequential or incidental damages resulting from the installation or use of these products since we do not determine the degree of care utilized during the product installation or service. We reserve the right to revise this data, as necessary, without notice. We welcome comments regarding this product literature.

Fiber Glass Systems™ 

STAR • SMITH • FIBERCAST

HEADQUARTERS

P.O. Box 37389, 2425 S.W. 36th Street
San Antonio, Texas 78237
Phone: 1 (210) 434-5043
Fax: 1 (210) 434-7543
www.starfiberglass.com
E-Mail: info@starfiberglass.com