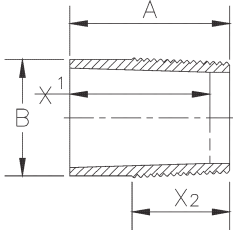


STAR® Super Seal Low Pressure Fittings (Adapters/Changeover)

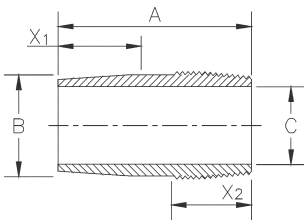
ADAPTERS

Bell x Male 8rd



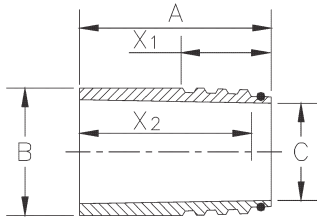
Product Code	Nom. Pipe Size In (mm)	Pressure PSI (MPa)		A in (mm)	B in (mm)	C in (mm)	X ₁ ⁽⁷⁾ in (mm)	X ₂ ⁽⁷⁾ in (mm)	Wt lb (kg)
		Static	Cyclic						
GAO452B23	2 (50,8)	450 (3,1)	300 (2,1)	5.60 (142,2)	2.74 (69,6)	1.94 (49,3)	1.75 (44,5)	2.94 (74,7)	1.2 (0,54)
GAO453B35	3 (76,2)	450 (3,1)	300 (2,1)	6.50 (165,1)	3.89 (98,8)	2.94 (74,7)	2.00 (50,8)	3.50 (88,9)	2.4 (1,09)
GAO454B45	4 (101,6)	450 (3,1)	300 (2,1)	8.00 (203,2)	4.94 (125,5)	3.93 (99,8)	2.65 (67,3)	4.38 (111,3)	4.1 (1,86)
GAO456B65	6 (152,4)	450 (3,1)	300 (2,1)	8.50 (215,9)	6.79 (172,5)	5.94 (150,9)	3.25 (82,6)	4.25 (108,0)	5.3 (2,40)

Spigot x Male 8rd



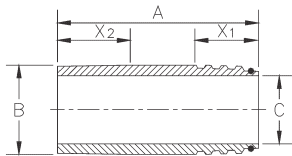
GAN452B23	2 (50,8)	450 (3,1)	300 (2,1)	5.75 (146,1)	2.74 (69,6)	1.94 (49,3)	1.75 (44,5)	2.94 (74,7)	1.0 (0,45)
GAN453B35	3 (76,2)	450 (3,1)	300 (2,1)	6.50 (165,1)	3.89 (98,8)	2.94 (74,7)	2.00 (50,8)	3.50 (88,9)	1.9 (0,86)
GAN454B45	4 (101,6)	450 (3,1)	300 (2,1)	8.00 (203,2)	4.94 (125,5)	3.93 (99,8)	2.65 (67,3)	4.38 (111,3)	4.2 (1,91)
GAN456B65	6 (152,4)	450 (3,1)	300 (2,1)	8.50 (215,9)	6.79 (172,5)	5.94 (150,9)	3.25 (82,6)	4.25 (108,0)	5.7 (2,59)
GAN458B85	8 (203,2)	450 (3,1)	300 (2,1)	10.00 (254,0)	8.79 (223,3)	7.74 (196,6)	4.20 (106,7)	4.85 (123,2)	9.92 (252,0)

Bell x Star Super Seal Male



GAO452R2B	2 (50,8)	450 (3,1)	300 (2,1)	6.00 (152,4)	2.91 (73,9)	1.94 (49,3)	3.00 (76,2)	1.75 (44,5)	1.6 (0,73)
GAO453R3B	3 (76,2)	450 (3,1)	300 (2,1)	6.25 (158,8)	4.07 (103,4)	2.94 (74,7)	3.00 (76,2)	2.00 (50,8)	2.4 (1,09)
GAO454R4B	4 (101,6)	450 (3,1)	300 (2,1)	7.15 (181,6)	5.11 (129,8)	3.93 (99,8)	3.25 (82,6)	2.65 (67,3)	4.3 (1,95)
GAO456R6B	6 (152,4)	450 (3,1)	300 (2,1)	8.00 (203,2)	7.26 (184,4)	5.94 (150,9)	3.50 (88,9)	3.25 (82,6)	8.0 (3,63)
GAO308R8B	8 (203,2)	300 (3,1)	200 (1,4)	8.75 (222,3)	8.97 (227,8)	7.74 (196,6)	5.00 (127,0)	2.75 (69,7)	10.1 (4,58)
GAO458R8B	8 (203,2)	450 (3,1)	300 (2,1)	9.75 (247,7)	8.97 (227,8)	7.74 (196,6)	5.00 (127,0)	4.20 (106,7)	11.3 (5,13)

Spigot x Star Super Seal Male



GAN452R2B	2 (50,8)	450 (3,1)	300 (2,1)	7.00 (177,8)	2.91 (73,9)	1.94 (49,3)	3.00 (76,2)	1.75 (44,5)	1.9 (0,86)
GAN453R3B	3 (76,2)	450 (3,1)	300 (2,1)	7.00 (177,8)	4.07 (103,4)	2.94 (74,7)	3.00 (76,2)	2.00 (50,8)	3.2 (1,45)
GAN454R4B	4 (101,6)	450 (3,1)	300 (2,1)	8.00 (203,2)	5.11 (129,8)	3.93 (99,8)	3.25 (82,6)	2.65 (67,3)	4.9 (2,22)
GAN456R6B	6 (152,4)	450 (3,1)	300 (2,1)	8.80 (223,5)	7.26 (184,4)	5.94 (150,9)	3.50 (88,9)	3.25 (82,6)	8.8 (3,99)
GAN306R6B	8 (203,2)	300 (2,1)	200 (1,4)	9.80 (248,9)	8.97 (227,8)	7.74 (196,6)	5.00 (127,0)	2.75 (69,7)	11.3 (5,13)
GAN458R8B	8 (203,2)	450 (3,1)	300 (2,1)	11.20 (284,5)	8.97 (227,8)	7.74 (196,6)	5.00 (127,0)	4.20 (106,7)	13.0 (5,90)

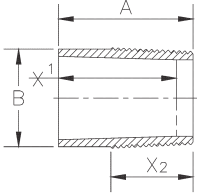
www.fiberglasssystems.com

P.O. Box 37389, 2425 SW 36th Street
San Antonio, Texas 78237 USA
Phone: 1 (210) 434-5043
Fax: 1 (210) 434-7543

NOV Fiber Glass Systems

ADAPTERS

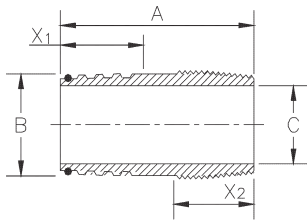
**Bell x
Star Super Seal Female**



Product Code	Nom. Pipe Size In (mm)	Pressure PSI (MPa)		A in (mm)	B in (mm)	C in (mm)	X ₁ ⁽⁷⁾ in (mm)	X ₂ ⁽⁷⁾ in (mm)	Wt lb (kg)
		Static	Cyclic						
GCO452R2B	2 (50,8)	450 (3,1)	300 (2,1)	5.25 (133,4)	3.05 (77,5)	2.38 (60,5)	3.00 (76,2)	1.75 (44,5)	0.8 (0,36)
GCO453R3B	3 (76,2)	450 (3,1)	300 (2,1)	5.50 (139,7)	4.35 (110,5)	3.52 (89,4)	3.00 (76,2)	2.00 (50,8)	1.6 (0,73)
GCO454R4B	4 (101,6)	450 (3,1)	300 (2,1)	6.40 (162,6)	5.50 (139,7)	4.56 (115,8)	3.25 (82,6)	2.65 (67,3)	2.9 (1,32)
GCO456R6B	6 (152,4)	450 (3,1)	300 (2,1)	7.25 (184,2)	8.00 (203,2)	6.62 (168,1)	3.50 (88,9)	3.25 (82,6)	6.9 (3,13)
GCO308R8B	8 (203,2)	300 (2,1)	200 (1,4)	9.00 (228,6)	9.20 (233,7)	7.97 (202,4)	5.00 (127,0)	2.80 (71,1)	8.0 (3,63)
GCO458R8B	8 (203,2)	450 (3,1)	300 (2,1)	10.44 (265,1)	9.55 (242,6)	8.06 (204,7)	5.00 (127,0)	4.20 (106,7)	13.0 (5,90)

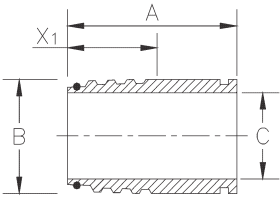
CROSSOVER

**Star Super Seal Male x
8rd Male**



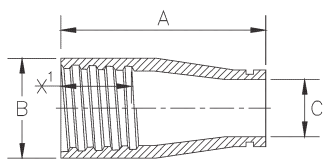
Product Code	Nom. Pipe Size In (mm)	Pressure PSI (MPa)		A in (mm)	B in (mm)	C in (mm)	X ₁ ⁽⁷⁾ in (mm)	X ₂ ⁽⁷⁾ in (mm)	Wt lb (kg)
		Static	Cyclic						
GCN452R23	2 (50,8)	450 (3,1)	300 (2,1)	8.00 (203,2)	2.91 (73,9)	1.94 (49,3)	3.00 (76,2)	2.94 (74,7)	2.2 (1,00)
GCN453R35	3 (76,2)	450 (3,1)	300 (2,1)	8.50 (215,9)	4.07 (103,4)	2.94 (74,7)	3.00 (76,2)	3.50 (88,9)	3.8 (1,72)
GCN454R45	4 (101,6)	450 (3,1)	300 (2,1)	10.00 (254,0)	5.11 (129,8)	3.93 (99,8)	3.25 (82,6)	4.38 (111,3)	6.1 (2,77)
GCN456R65	6 (152,4)	450 (3,1)	300 (2,1)	10.50 (266,7)	7.26 (184,4)	5.94 (150,9)	3.50 (88,9)	4.25 (108,0)	10.5 (4,76)
GCN458R85	8 (203,2)	450 (3,1)	300 (2,1)	12.00 (304,8)	8.97 (227,8)	7.74 (196,6)	5.00 (127,0)	4.85 (123,2)	13.9 (6,31)

**Star Super Seal Male x
Groove**



GCN452R2G	2 (50,8)	450 (3,1)	300 (2,1)	7.30 (185,4)	2.91 (73,9)	1.94 (49,3)	3.00 (76,2)	---	2.0 (0,91)
GCN303R3G	3 (76,2)	300 (2,1)	200 (1,4)	8.50 (215,9)	4.07 (103,4)	2.94 (74,7)	3.00 (76,2)	---	3.8 (1,72)
GCN224R4G	4 (101,6)	225 (1,6)	150 (1,0)	9.50 (241,3)	5.11 (129,8)	3.93 (99,8)	3.25 (82,6)	---	5.8 (2,63)
GCN226R6G	6 (152,4)	225 (1,6)	150 (1,0)	10.00 (254,0)	7.26 (184,4)	5.94 (150,9)	3.50 (88,9)	---	10.0 (4,54)
GCN228R8G	8 (203,2)	225 (1,6)	150 (1,0)	11.00 (279,4)	8.97 (227,8)	7.74 (196,6)	5.00 (127,0)	---	12.7 (5,76)

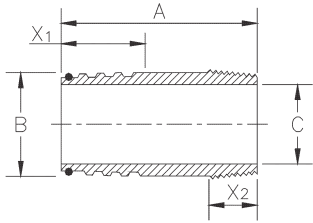
**Star Super Seal Female x
Groove**



GCO452R2G	2 (50,8)	450 (3,1)	300 (2,1)	5.25 (133,4)	3.05 (77,5)	1.94 (49,3)	3.00 (76,2)	---	1.0 (0,45)
GCO303R3G	3 (76,2)	300 (2,1)	200 (1,4)	6.00 (152,4)	4.35 (110,5)	2.94 (74,7)	3.00 (76,2)	---	1.8 (0,82)
GCO224R4G	4 (101,6)	225 (1,6)	150 (1,0)	6.40 (162,6)	5.50 (139,7)	3.93 (99,8)	3.25 (82,6)	---	3.0 (1,36)
GCO226R6G	6 (152,4)	225 (1,6)	150 (1,0)	7.75 (196,9)	8.00 (203,2)	5.94 (150,9)	3.50 (88,9)	---	7.3 (3,31)
GCO228R8G	8 (203,2)	225 (1,6)	150 (1,0)	10.44 (265,1)	9.20 (233,7)	7.74 (196,6)	5.00 (127,0)	---	8.0 (3,63)

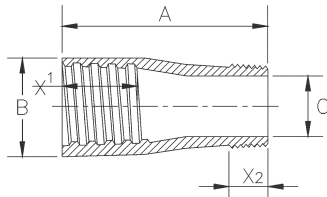
CROSSOVER

Star Super Seal Male x Male NPT



Product Code	Nom. Pipe Size In (mm)	Pressure PSI (MPa)		A in (mm)	B in (mm)	C in (mm)	X ₁ ⁽⁷⁾ in (mm)	X ₂ ⁽⁷⁾ in (mm)	Wt lb (kg)
		Static	Cyclic						
GCN452R21	2 (50,8)	450 (3,1)	300 (2,1)	7.30 (185,4)	2.91 (73,9)	1.94 (49,3)	3.00 (76,2)	1.05 (26,7)	2.0 (0,91)
GCN453R31	3 (76,2)	450 (3,1)	300 (2,1)	8.50 (215,9)	4.07 (103,4)	2.94 (74,7)	3.00 (76,2)	1.63 (41,4)	3.8 (1,72)
GCN454R41	4 (101,6)	450 (3,1)	300 (2,1)	9.50 (241,3)	5.11 (129,8)	3.93 (99,8)	3.25 (82,6)	1.73 (43,9)	5.8 (2,63)
GCN456R61	6 (152,4)	450 (3,1)	300 (2,1)	10.00 (254,0)	7.26 (184,4)	5.94 (150,9)	3.50 (88,9)	1.95 (49,5)	10.0 (4,54)
GCN458R81	8 (203,2)	450 (3,1)	300 (2,1)	11.00 (279,4)	8.97 (227,8)	7.74 (196,6)	5.00 (127,0)	2.15 (54,6)	12.7 (5,76)

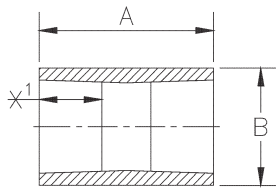
Star Super Seal Female x Male NPT



GCO452R21	2 (50,8)	450 (3,1)	300 (2,1)	5.25 (133,4)	3.05 (77,5)	2.81 (71,4)	3.00 (76,2)	1.05 (26,7)	1.0 (0,45)
GCO453R31	3 (76,2)	450 (3,1)	300 (2,1)	6.00 (152,4)	4.35 (110,5)	3.97 (100,8)	3.00 (76,2)	1.63 (41,4)	1.8 (0,82)
GCO454R41	4 (101,6)	450 (3,1)	300 (2,1)	6.40 (162,6)	5.50 (139,7)	5.00 (127,0)	3.25 (82,6)	1.73 (43,9)	3.0 (1,36)
GCO456R61	6 (152,4)	450 (3,1)	300 (2,1)	7.75 (196,9)	8.00 (203,2)	7.18 (182,4)	3.50 (88,9)	1.95 (49,5)	7.3 (3,31)
GCO458R81	8 (203,2)	450 (3,1)	300 (2,1)	10.44 (265,1)	9.55 (242,6)	8.87 (225,3)	5.00 (127,0)	2.15 (54,6)	12.0 (5,44)

SLEEVE COUPLING

Bell x Bell



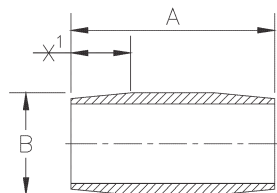
Product Code	Nom. Pipe Size In (mm)	Pressure PSI (MPa)		A in (mm)	B in (mm)	X ₁ ⁽⁷⁾ in (mm)	Wt lb (kg)
		Static	Cyclic				
GSC452B	2 (50,8)	450 (3,1)	300 (2,1)	5.375 (136,5)	2.60 (66,0)	1.75 (44,5)	0.41 (0,19)
GSC453B	3 (76,2)	450 (3,1)	300 (2,1)	5.875 (149,2)	3.85 (97,8)	2.00 (50,8)	0.95 (0,43)
GSC454B	4 (101,6)	450 (3,1)	300 (2,1)	7.375 (187,3)	5.00 (127,0)	2.65 (67,3)	2.05 (0,93)
GSC456B	6 (152,4)	450 (3,1)	300 (2,1)	8.000 (203,2)	7.30 (185,6)	3.25 (82,6)	4.79 (2,17)
GSC308B	8 (203,2)	300 (2,1)	200 (1,4)	7.100 (180,3)	8.45 (214,6)	2.75 (69,9)	3.70 (1,68)
GSC458B	8 (203,2)	450 (3,1)	300 (2,1)	9.912 (251,8)	8.80 (223,5)	4.20 (106,7)	8.10 (3,67)

Notes:

1. All fittings centerline-to-face dimensions nominal $\pm 1/4$ inch.
2. All fittings filament wound fiberglass reinforced epoxy.
3. Taper angle on bell end configuration is $1 3/4^\circ$.
4. Weights are approximate.
5. Dimensions are American Standards converted to Metric.
7. The X₁ and X₂ Dimensions are insertion depths.

NIPPLES

Spigot x Spigot



Product Code	Nom. Pipe Size In (mm)	Pressure PSI (MPa) Static Cyclic		Length - in (cm)				B in (mm)	X ₁ ⁽⁷⁾ in (mm)
				A=6 (152,4)	A=8 (203,2)	A=10 (254,0)	A=12 (304,8)		
				Weight - lbs (kgs)					
GNN452B-	2 (50,8)	450 (3,1)	300 (2,1)	0.21 (0,30) GNN452B-006	0.28 (0,40) GNN452B-008	0.35 (0,50) GNN452B-010	0.43 (0,60) GNN452B-012	2.34 (59,4)	1.75 (44,5)
GNN453B-	3 (76,2)	450 (3,1)	300 (2,1)	---	0.53 (0,80)	0.66 (1,0) GNN453B-010	0.80 (1,2) GNN453B-012	3.50 (88,9)	2.00 (50,8)
GNN454B-	4 (101,6)	450 (3,1)	300 (2,1)	---	---	1.0 (1,50) GNN454B-010	1.20 (1,8) GNN454B-012	4.51 (114,6)	2.65 (67,3)
GNN456B-	6 (152,4)	450 (3,1)	300 (2,1)	---	---	---	2.44 (3,6) GNN456B-012	6.65 (168,9)	3.25 (82,6)
GNN458B-	8 (203,2)	450 (3,1)	300 (2,1)	---	---	---	3.84 (5,7) GNN458B-012	8.05 (204,5)	4.20 (106,7)

National Oilwell Varco has produced this brochure for general information only, and it is not intended for design purposes. Although every effort has been made to maintain the accuracy and reliability of its contents, National Oilwell Varco in no way assumes responsibility for liability for any loss, damage or injury resulting from the use of information and data herein nor is any warranty expressed or implied. Always cross-reference the bulletin date with the most current version listed at the web site noted in this literature.

www.fiberglasssystems.com

P.O. Box 37389, 2425 SW 36th Street
San Antonio, Texas 78237 USA
Phone: 1 (210) 434-5043
Fax: 1 (210) 434-7543

NOV Fiber Glass Systems

© 2009, NATIONAL OILWELL VARCO
® Trademark of NATIONAL OILWELL VARCO
O1550 Issued August 2009 - Supersedes October 2005